

WISCONSIN

**9.2 HP GASOLINE
DUAL FUEL, LPG &
NG OPTIONS**

AENL3

**YOUR
HEAVY-DUTY
SOURCE OF
POWER**

Setting industry standards since 1909, Wisconsin continues to offer you a wide selection of air-cooled gasoline engines. Five models allow you to choose from single-cylinder, twin-cylinder and four-cylinder engines with power ranging from 7.0 to 65.9 HP.

WISCONSIN CONSTRUCTION

Wisconsin Engines are designed for those tough applications that require durability and long life reliability. The multi-cylinder, v-block design offers unique side load capability for a wide variety of industrial applications.



STANDARD FEATURES

- Single Cylinder
- Air-Cooled
- Forged-Steel Crankshaft with Tapered Roller Main Bearings
- Heavy-Duty Cast-Iron Block
- Forged Steel Connecting Rod
- Cast Iron Cylinders
- Centrifugal Flyweight Governor
- Aluminum Alloy Pistons
- Heat Resistant Alloy Steel Valves
- Replaceable Valve Guides
- Flywheel Magneto Ignition
- 1.7 Gallon Fuel Tank (6.4 Liters)

WORLWIDE PARTS & SERVICE

We back our engines with a worldwide service network. Experienced Wisconsin representatives are always ready to meet your needs.



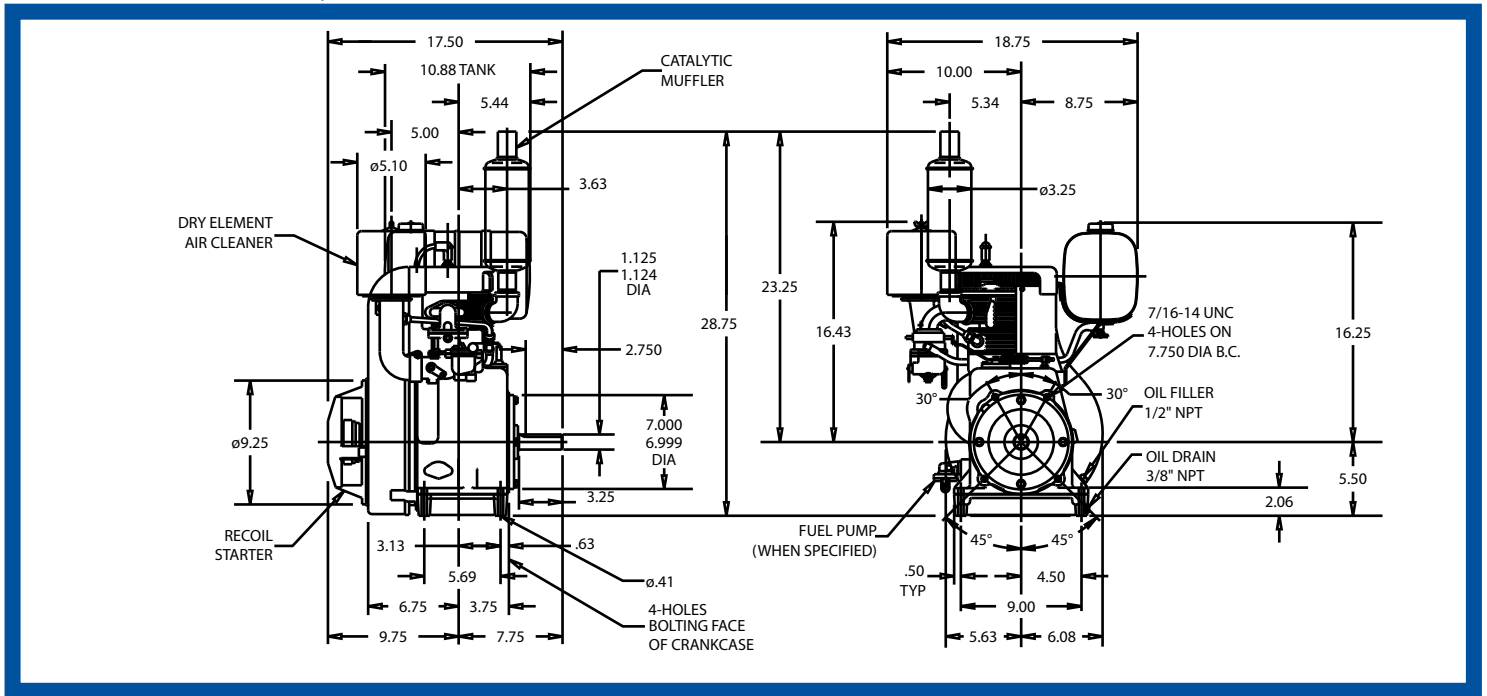
**WISCONSIN
MOTORS, LLC**

WISCONSIN

9.2 HP GASOLINE

DUAL FUEL, LPG & NG OPTIONS

AENL3



* Net Weight Dry Standard Engine 110 lbs. (50 kg)

Bore 3.00 in. (76 mm)
Stroke 3.25 in. (82.5 mm)
Displacement 23 cu. in. (377 cc)

RPM	HP	KW	TORQUE	
			Ft. lbs	Kg-m
2000	6.1	4.6	16.0	2.22
2200	6.8	5.1	16.2	2.25
2400	7.4	5.5	16.2	2.24
2600	7.9	5.9	15.9	2.21
2800	8.5	6.3	15.9	2.20
3000	8.9	6.6	15.6	2.15
3200	9.2	6.9	15.1	2.09
3400	9.2	6.9	14.2	1.97
3600	9.2	6.9	13.4	1.86

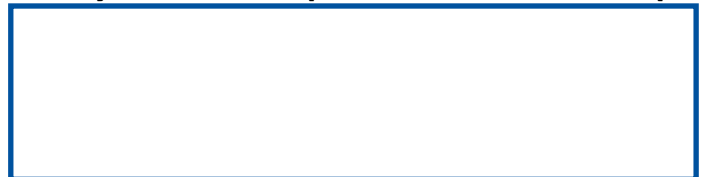
POWER OUTPUT

Maximum dynamometer net brake horsepower of the basic engine corrected to a pressure reading of 29.31 in. Hg (99 KPA) dry barometer and temperature of 77° F (25° C) when tested in accordance with SAE Test Code J1349. Engine output can be demonstrated within 5% at the factory under standard rating conditions. Power will decrease 3.5% for each 1000 ft. (305 M) above 500 ft. and 1% for each 10° F above standard temperature of 77° F (25° C). For continuous operation, applications should be limited to 80% of power shown.

OPTIONS FOR EVERY NEED

- Heavy Duty Element Air Cleaner
- SAE Bell Housings & Drive Hubs
- Choice of Clutches, Clutch Reduction Take-Offs & Reducers
- Long Life Exhaust Valves & Inserts With Valve Rotators
- Multiple Crankshaft Configurations
- Electric Fuel Pump
- Large Capacity Fuel Tanks
- High-Temperature Safety Switch
- 12 volt, 25 amp Flywheel Alternator

* Contact your Wisconsin Representative for Additional Options



WISCONSIN MOTORS, LLC

SALES OFFICE:

2020 Fletcher Creek Dr. • Memphis, TN, 38133
 Phone (901) 371-0353 • Toll Free 800-932-2858

www.wisconsinmotors.com